



INTERNATIONAL BACCALAUREATE CAREER-RELATED PROGRAMME (CP)



Philosophy - An innovative and flexible programme designed to cater for a particular passion or interest

Gen Zalphas are growing up in a rapidly changing world. They have digital independence and become physically, socially, psychologically, educationally, and commercially sophisticated at a younger age than previous generations. Therefore, Gen Zalphas like to **learn in new and different ways** and they now demand **voice, choice and agency in what, how, where and when they learn**. Social connectedness and mental health is increasingly a challenge for this generation and therefore learning about themselves, maintaining their own connections and prioritising **work-life-wellbeing balance** is vital. They will live longer and therefore maintaining physical health and wellbeing will also be crucial to a happier and healthier life.

The world of work is evolving - this generation will hold multiple jobs over multiple different careers and are more likely to have a side-hustle. They will seek to engage in education throughout multiple stages of life (not just as a school-leaver) and seek continuous re-training opportunities as they work into their 70s. This will impact this generation financially - education is expensive beyond schooling years and therefore access to upskilling via new ways of learning such as micro credentialing will become increasingly popular and valued. Affordability of housing and living will be more of a challenge so opportunities to **'earn while they learn'** may be more important.

Gen zalphas' purpose for working will also change - they will **seek more purpose, meaning and fulfilment** from their jobs and careers than generations did previously, and place less importance on remuneration. Equipping this generation with the **competencies to adapt, succeed and thrive in this new world** is now pivotal for educators. For more information about the predictions for Gen Alpha see <https://mccrindle.com.au/>

Type of learning

Both on and off campus	Academic and Practical learning
Contributive/Service learning	Collaborative
Refining competencies for the workplace	Reflective
Real-world	Personal inquiries
	Mentoring from adults

Types of Learner

Keen to explore an interest or passion	Enjoys connection
Critical & Creative thinkers	Innovative
Service-minded	Empathetic/Inclusive
Inquirers	Becoming independent
Thinks globally, acts locally	

Secondary school experiences

- Choice of subjects that match your passion or interests
- Personal and Professional Skills (PPS) course
- Contributive/Service Learning
- Individual Reflective Project
- Visits to workplaces and work experiences

What makes this option unique?

- Agency - choice, voice and co-design of some of the learning
- Personalised to your interests right now
- 'Real world' learning partners and learning opportunities
- Language development and cultural awareness of your choice
- Industry networks developed giving a competitive edge

Possible next steps in year 13

University*
or TAFE

Earn & learn
using
qualification

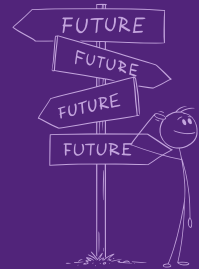
Employment

Gap year

Endless
possibilities

Outcomes

- Selection Rank*
- QCE



Subjects Offered

Group 1	Group 2	Group 3	Group 4	Group 5	Group 6	IB Core
English Language & Literature	Spanish Chinese	Global Politics Business Management Philosophy ESS*	Biology Chemistry Physics Sports, Exercise & Health Science Design Computer Science ESS*	Maths AI Maths AA	Film Visual Art	Extended Essay (EE) Theory of Knowledge (TOK) Creativity, Activity, Service (CAS)

Sample Weekly Timetable

